



EXPEDITION

INSTRUCTION MANUAL

GENERAL SAFETY, OPERATING INSTRUCTIONS AND LIMITED WARRANTY

READ CAREFULLY BEFORE USING YOUR FIREARM

Important: Keep this manual with your firearm.

The information contained in this manual is useful, both for beginners and experienced shooters. In addition to important information about the function, cleaning and care of the firearm, this manual contains instructions that will be very helpful in shooting safely.

The most important rule of safe firearm handling is always keep the muzzle pointed in a safe direction!



TaurusUSA.com

 /TaurusUSA

 @taurususa

 /TaurusUSA




CONTENTS

Firearm Safety.....	6
Get To Know Your Firearm	8
Ammunition	10
Operating Instructions.....	12
Care and Maintenance.....	25
Exploded View.....	26
Taurus® Service	28
Limited Warranty	30

WARNING

The safety warnings in this booklet are important. By understanding the dangers inherent in the use of any firearm, and by taking the precautions described herein, you can safely enjoy your Taurus® firearm. Failure to follow any of these warnings may result in serious injury to you or others, as well as severe damage to the firearm or other property.

SIGNAL WORDS AS DEFINED BY ANSI Z535.6 AND Z535.4 STANDARDS.


 DANGER	DANGER indicates a hazardous situation which, if not avoided, will result in death or serious injury.
 WARNING	WARNING indicates a hazardous situation which, if not avoided, could result in death or serious injury.
 CAUTION	CAUTION indicates a hazardous situation which, if not avoided, could result in minor or moderate injury.
NOTICE	NOTICE is used to address practices not related to physical injury.

FIREARM SAFETY

 DANGER
When a firearm discharges, the bullet or shot can strike a person, resulting in death or serious bodily injury.

The three basic keys to safe handling of firearms:

- 1. KEEP YOUR FINGER OFF THE TRIGGER UNTIL YOU ARE READY TO FIRE.** If you maintain good trigger discipline, it is extremely unlikely the firearm will fire.
- 2. KEEP THE MUZZLE POINTED IN A SAFE DIRECTION.** Even if the firearm discharges, if the muzzle is pointed in a safe direction, no one will be injured.
- 3. NEVER TRUST ANY SAFETY MECHANISM.** If you adopt the attitude that you will not trust any safety mechanism, you will be vigilant about keeping your finger off the trigger and keeping the muzzle pointed in a safe direction.

 WARNING - KNOW YOUR TARGET
Never fire at targets at close range. Ricochets can and do cause death or serious bodily injury. What constitutes "close range" depends on many factors including target material, bullet caliber and angle of impact.

 WARNING - HUNTING
Never climb a tree, tree-stand, or fence with a loaded rifle. Never point a firearm at yourself or anyone else. When using a tree-stand rope, always make sure your rifle is unloaded.

KNOW WHAT IS BEHIND YOUR TARGET. Unless you are shooting into a bullet trap designed to capture the type of ammunition you are firing, projectiles may pass through the target and strike anyone or anything beyond. Bullets can travel miles.

ALWAYS WEAR HEARING PROTECTION. Firearms are loud. The sound they generate is greater indoors. Repeated exposure to loud noises can cause deafness. Hearing protection is rated by decibel reduction. Look for “dB” reduction of 30 or more when purchasing ear protection. Modern ear protection can allow normal hearing until the sound from the discharge reaches the ear. Significant protection can be achieved by layering hearing protection, for example, wearing 30dB rated foam plugs along with 20dB rated ear muffs.

ALWAYS WEAR EYE PROTECTION. In normal operation, firearms emit hot high-velocity gases, particles and metal. These materials flying into your eye can cause blindness. Protect your vision with proper eye protection. Any eye protection may be better than none, but look for ANSI Z87.1-2003 certified eyewear for the best protection.

NEVER HANDLE FIREARMS WHILE UNDER THE INFLUENCE OF DRUGS OR ALCOHOL. Firearms are dangerous. Handling firearms while impaired by drugs or alcohol is foolhardy and can result in serious injury or death. This warning includes prescription drugs that contain a warning about using machinery or driving while taking the medication.

MODIFIED FIREARMS ARE DANGEROUS, AND USE CAN RESULT IN SERIOUS INJURY OR DEATH. “Trigger jobs,” polishing original components or installing aftermarket parts can cause a firearm to function in ways different than intended. Some such work may also be illegal.

DAMAGED FIREARMS ARE DANGEROUS, AND USE CAN RESULT IN SERIOUS INJURY OR DEATH. Repairs should always be made by a qualified gunsmith or by a factory-authorized repair site. Work done by those unfamiliar with the design can cause a firearm to function in ways different than intended.

NEVER ATTEMPT TO DISASSEMBLE OR CLEAN A LOADED FIREARM. DOING SO CAN RESULT IN SERIOUS BODILY INJURY OR DEATH. How often have we heard “But it went off while I was cleaning it!” or, “I did not know it was loaded!” or, “It was jammed, and I tried to take it apart!”?

IF A FIREARM GOES OFF, THERE WAS A ROUND OF AMMUNITION IN THE CHAMBER. Period. “Clear” (or empty) the firearm of all ammunition before disassembling or cleaning.

As owner of your new Taurus firearm, you are responsible for: (1) Keeping your finger off the trigger; (2) Pointing the muzzle in a safe direction; (3) Removing ammunition from the firearm; and (4) Looking and feeling in the chamber to confirm the firearm is empty. An empty (unloaded) firearm cannot fire.

FIREARM SAFETY SYSTEMS

Firearm safety is supported by a system. With your firearm, the system is made up of the following:

1. You! Your involvement in safety cannot be overemphasized. No safety component can keep your finger off the trigger and the muzzle pointed in a safe direction. Also, you are the key to never trusting any of the mechanical parts of the safety system.

2. Manual Safety. Always use the manual safety. The manual safety is located on the tang of the receiver and must be manually pushed to the desired position.

3. Trigger Guard. This is a physical obstruction that helps prevent unintended pressing of the trigger. Do not modify the trigger guard.

4. This Manual. Use this manual to learn about your firearm and to help you use your firearm safely. If you use the manual, you will be a long way toward being a knowledgeable and safe firearms owner.

5. Online Resources. Taurusmfg.com hosts a library of videos concerning safety and related issues. This library is being supplemented and revised. Please visit the site and take advantage of what is available there as part of your education regarding using your shotgun in a safe fashion.

GET TO KNOW YOUR FIREARM



*The chamber is the rear most part of the barrel. It can only be seen when the bolt is in the "open" position.

TECHNICAL SPECIFICATIONS

The Expedition is a bolt action rifle. Operate it by (1) lifting the bolt handle, (2) pulling the bolt rearward and then pushing the bolt forward, and (3) rotating the bolt handle downward until it stops. This process takes a cartridge from the magazine and loads it into the chamber for firing.



WARNING

Your rifle can still fire with the magazine removed.

UNPACKING YOUR FIREARM

Some metal parts of the firearm have been coated at the factory with a rust preventative compound.

Before using your firearm, clean the anti-rust compound from the inside of the barrel, receiver, bolt mechanism and the action/chamber areas. A high quality, lightweight gun oil should be used to remove this compound and to give your new firearm its first lubrication. Clean the barrel using a cleaning rod and patch as explained in "CARE AND MAINTENANCE" at the end of this owner's manual. Avoid applying too much oil, only a light film is necessary. Excess oil should be wiped off.

AMMUNITION

WARNING

Using the wrong ammunition in your rifle can result in serious bodily injury and damage to your rifle. Make certain the ammunition you load is the same caliber as is marked on the rifle.

WARNING - AMMUNITION AND INDUSTRY STANDARDS

Use only clean, dry factory-loaded ammunition. Old, damaged, wet or oily ammunition may fire at pressures higher than industry standard, causing injury to you and bystanders or damage to your rifle.

Do not use reloaded ammunition in your rifle. Its firing pressures are unknown and may well exceed industry standard, causing injury to you and bystanders or damage to your rifle.

Odd sounds are signs of trouble. If a round “does not sound right” when it goes off, stop firing right away. A bullet may be stuck in the barrel. Firing the rifle in this condition may cause pressures higher than industry standard, causing injury to you and bystanders or damage to your rifle.

If you hear any odd sounds when firing your rifle, stop firing, and unload the rifle in accordance with the procedure in this manual. Once unloaded, fully remove the magazine and bolt to inspect the bore. If you don't see light, there is something stuck in the bore. Do not fire the rifle again and take the rifle to a qualified gunsmith or contact the Taurus® Service Department at 800-327-3776.

WARNING - LEAD AND HAZARDOUS CHEMICAL EXPOSURE

Discharging firearms in poorly ventilated areas, handling, and /or cleaning firearms or handling ammunition can expose you to chemicals including lead which is known to the state of California to cause cancer and birth defects or other reproductive harm. For more information, go to www.P65Warnings.ca.gov

Have adequate ventilation at all times. Wash hands thoroughly after exposure with soap and water.

SHOOTING OR CLEANING GUNS MAY EXPOSE YOU TO LEAD

NOTICE

Use only bonded or solid copper bullets in rifles chambered for 8.6 Blackout ammunition.

MANUAL SAFETY

WARNING

Always keep the manual safety in the "ON" (safe) position until you are ready to fire at the target. Always keep the muzzle pointed in a safe direction. Failure to follow these instructions could result in death or serious injury.

The manual safety lever is located on the right side of the receiver to the rear of the bolt handle (when in the locked position). The safety lever can only be activated when the firearm is cocked or the bolt is fully open. **DO NOT** check if the rifle is cocked by pulling the trigger, first check if it is unloaded.

To put the manual safety in the "ON" (safe) position, move the lever back towards the buttstock (Fig. 1) which is away from the red dot.

To put the manual safety in the "OFF" (fire) position, move the lever forward (Fig. 2) towards the red dot, which indicates that the firearm is ready to fire.



Manual Safety "ON"



Manual Safety "OFF"

NOTICE

Remember that the manual safety is a mechanical device that can never replace safe firearm handling practices.

WARNING

Never rely on any mechanism or safety device. Always keep the muzzle pointed in a safe direction and your finger off the trigger.

WARNING

Keep the manual safety in the "ON" (safe) position until you are ready to fire at the target.

WARNING

Do not modify the manual safety. Modification can result in death or serious injury.

COCKING INDICATOR

The cocking indicator is located at the rear of the bolt. The indicator is marked with a red dot. When the firearm is cocked, the indicator will protrude from the bolt and the red dot is visible (Fig. 1). When the firearm is fired, the cocking indicator retracts into the bolt shroud and is no longer visible (Fig. 2).



Cocking indicator on "cocked" position



Cocking indicator on "fired" position

WARNING

Do not depend on the red color alone to indicate your firearm's safety status. Time, exposure to the elements and the abrasive action of cleaning agents can erase it. Failure to follow this warning can result in death or serious injury.

INSTALLING AND REMOVING THE BOLT

WARNING

Always keep the muzzle pointed in a safe direction. Before inserting or removing the bolt, visually inspect the chamber to be sure the firearm is completely unloaded. Place the manual safety in the "ON" (safe) position. Failure to do so can result in death or serious injury.

Before inserting the bolt into the receiver, cock the firing pin. When the firing pin is cocked, the cocking indicator is visible at the rear of the bolt. To cock the firing pin, simply turn the bolt sleeve clockwise (when viewed from the indicator end) until the firing pin sear engages the bolt notch.

Bolt installation:

- Align the 3 lugs of the bolt face to the rear of the receiver.
- Once the 3 lugs are aligned with the matching 3 cutouts on the receiver, push the bolt completely forward and rotate the handle down to lock it into place. You do not have to depress the bolt release to insert the bolt, but you may do so to ease the installation.
- Immediately confirm the manual safety in the "ON" (safe) position.

Bolt removal:

- Place the manual safety in the "ON" (safe) position.
- Rotate the bolt handle up.
- While pressing and holding the bolt release, slide the bolt towards the buttstock until it is completely removed from the receiver.

WARNING

When removing the bolt from the receiver, take care to prevent the cocking indicator from striking and damaging the stock.

LOADING

WARNING

When loading your firearm, always keep the muzzle pointed in a safe direction, the manual safety in the "ON" (safe) position, and your finger off the trigger. Failure to do so can result in death or serious injury.

There are two methods used to load a cartridge into the chamber: (1) from the magazine, and (2) through the ejection port.

Loading the chamber from the magazine

- Eject the magazine from the firearm by pressing the magazine release.
- Place the rim of a cartridge on the front of the follower and press down while simultaneously sliding the cartridge rearward into the magazine under the feed lips. Repeat this procedure until you reach the capacity of the magazine or the desired number of rounds.
- Close the bolt and place the manual safety in the "ON" (safe) position.
- Insert the loaded magazine into the firearm until it is held in place by the magazine catch.
- Load the chamber by lifting the bolt handle completely up. Draw the bolt fully rearward, then push the bolt forward and rotate the handle down. Immediately verify that the manual safety is in the "ON" (safe) position.

WARNING

Disengage the safety and the firearm is now ready to fire.

Loading directly to the chamber (single-shot)

- Insert an unloaded magazine into the firearm.
- Lift the bolt handle completely up and draw the bolt fully rearward. Inspect the chamber to make sure it is empty.
- Insert a single cartridge into the ejection port and place it on top of the magazine.
- Push the bolt completely forward and rotate the bolt handle down to load the single cartridge into the chamber.
- Immediately verify if the manual safety is in the "ON" (safe) position.

WARNING

Disengage the safety and the firearm is ready now to fire.

WARNING

Your rifle can still fire with the magazine removed. Always keep the muzzle pointed in a safe direction.

WARNING

To avoid accidental discharge, do not carry your firearm with a cartridge in the chamber. When you are done shooting, place the manual safety in the "ON" (safe) position, and unload the chamber. Failure to do so can result in death or serious injury.

HOW TO FIRE

WARNING

Never chamber a cartridge or disengage the manual safety unless you are ready to shoot at the target. Always keep the muzzle pointed in a safe direction. Failure to follow these instructions can result in death or serious injury.

- Load a cartridge into the chamber as previously described.
- With a cartridge in the chamber, aim at the target and move the manual safety to the "OFF" (fire) position.
- Squeeze the trigger to fire.
- After a cartridge is fired, cycle the bolt rearward to eject the empty cartridge case.

If you wish to continue shooting, and the magazine contains ammunition, push the bolt fully forward. This movement picks up a loaded cartridge from the magazine and chambers it. You can continue in this manner until the magazine is empty by pulling the trigger to fire each cartridge.

If you are done shooting, leave the bolt to the rear in the open position and visually inspect the chamber, barrel, and magazine to be sure there are no cartridges left in the firearm.

WARNING

After you are finished firing, immediately place the manual safety in the "ON" (safe) position.

WARNING

With the bolt open, inspect the chamber, barrel, and magazine to be sure that the firearm is completely unloaded.

UNLOADING

WARNING

When unloading your firearm, always keep the muzzle pointed in a safe direction, the manual safety in the "ON" (safe) position, and your finger off the trigger. Failure to do so can result in death or serious injury.

WARNING

Always inspect the chamber, barrel, and magazine after unloading to be sure there are no live cartridges left in the firearm.

- Open the bolt and eject any cartridge in the chamber. Leave the bolt in the rearward position with the action open.
- Look into the chamber to verify if it is clear.
- Push the magazine release button rearward and remove the magazine.
- Close the bolt and ensure the manual safety is in the "ON" (safe) position.
- Strip all the cartridges from the magazine by pushing forward on the rim of the top cartridge and slide each cartridge out of the magazine, one at a time.
- Place the empty magazine back into the firearm.

TRIGGER ADJUSTMENT

The trigger system is pre-set at the factory for approximately 3 1/2 pounds and can be adjusted within a range of 3 to 5 pounds.

Though the trigger adjustments should be unnecessary, the trigger pull weight and overtravel can be tuned to your specifications. Taurus recommends that a qualified gunsmith perform this procedure.

Adjusting trigger pull weight

- Remove the magazine.
- Open the bolt and ensure the firearm is completely unloaded. Remove the bolt.
- Remove the two action screws with a 4 mm Allen wrench.
- Lift the trigger guard and bottom plate from the stock.
- There are two screws in front of the trigger housing. The screw that is furthest from the action can be turned to adjust trigger pull weight, and the screw that is closest to the action can be turned to adjust overtravel.

To decrease the trigger pull weight, turn the adjustment screw that is furthest from the action in a counterclockwise direction using a 1/16" Allen wrench.

NOTICE

The trigger pull weight screw will fall out when the trigger has been adjusted to its minimum pull weight of 3 pounds.

To increase the trigger pull weight, turn the adjustment screw that is furthest from the action in a clockwise direction using a 1/16" Allen wrench.

NOTICE

Do not turn the trigger pull weight screw in too far. Doing so will limit the trigger travel, rendering the trigger inoperative, and could damage the pull weight spring.

The trigger pull weight can be measured, with the firearm completely unloaded and the bolt closed, using a very accurate spring scale or a commercially available set of trigger pull measuring weights. Most gunsmiths can also measure trigger pull weight for you.

NOTICE

If the trigger pull weight is increased too much, the trigger cannot be pulled. Turn the screw counterclockwise until the trigger can be pulled.

- When the adjustment is complete, place a drop of serviceable thread locker on the adjustment screw.
- Place the barreled action back in the stock and reinstall the trigger guard and bottom plate (trigger guard end first). Torque the two action screws to 55 inch-pounds.

TRIGGER ADJUSTMENT (CONTINUED)

Overtravel is the amount the trigger moves after the firing pin has been released by the sear. It should not be necessary to adjust overtravel on your Expedition Rifle. However, should the overtravel require adjustment, perform the following procedure:

- Remove the magazine.
- Open the bolt and ensure the firearm is completely unloaded.

Remove the bolt as explained previously.

- Remove the two action screws with a 4 mm Allen wrench.
- Lift the trigger guard from the stock.
- Carefully lift the barreled action out of the stock.
- There are two screws in front of the trigger housing. The screw that is furthest from the action can be turned to adjust trigger pull weight, and the screw that is closest to the action can be turned to adjust overtravel.

To increase the amount of overtravel, turn the adjustment screw closest to the action in a counterclockwise direction using a 1/16" Allen wrench.

To decrease the amount of overtravel, turn the adjustment screw closest to the action in a clockwise direction using a 1/16" Allen wrench.

NOTICE

If the overtravel screw is turned in too far, the trigger cannot be pulled far enough to release the sear and fire the firearm. Turn the screw counterclockwise until the trigger can be pulled.

When finished making the adjustment, place a drop of serviceable thread locker on the adjustment screw.

Place the barreled action back in the stock and reinstall the trigger guard. Torque the two action screws to 55 inch-pounds.

MOUNTING OPTICS

WARNING

Before mounting a scope, sight, or other accessories to your firearm, place the manual safety in the on position. Press the bolt unlock button, open the action and make certain your rifle is completely unloaded. Keep the muzzle pointed in a safe direction. Failure to follow these warnings can result in death or serious injury.

The top of the Expedition's receiver is drilled and tapped for a scope base. Each scope base is mounted using four 6-48 screws. Follow the scope mount manufacturer's instructions for proper installation.

CARE AND MAINTENANCE

WARNING

Before cleaning, (1) keep the muzzle pointed in a safe direction, (2) keep your finger off the trigger, (3) open the bolt, and (4) ensure the firearm is completely unloaded by looking and feeling in the chamber.

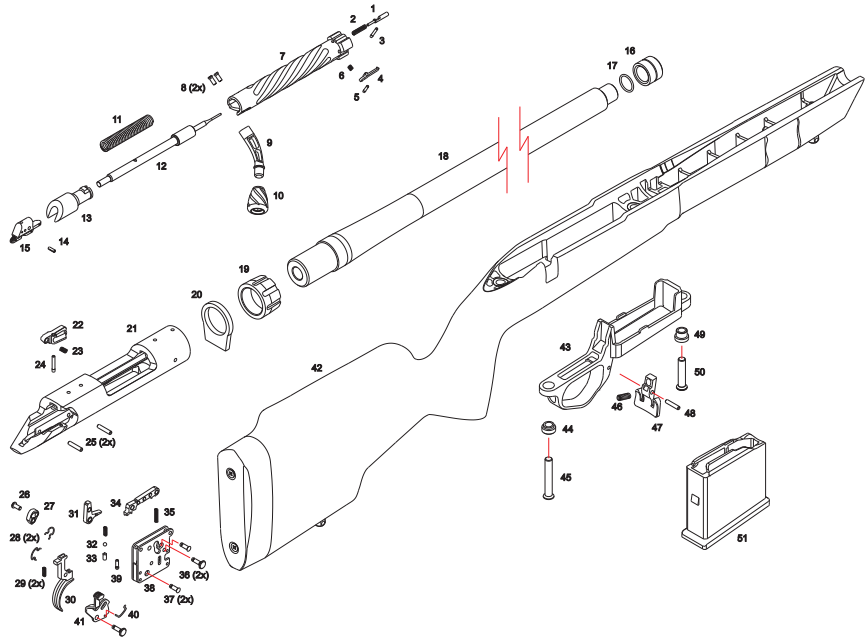
The firearm may be cleaned and lubricated under normal conditions without any disassembly. For optimal performance, we recommend you clean and lubricate your firearm after every 50 rounds fired. At the same time, **check for and tighten any loose screws or pins. Tighten the screws and press pins back in as needed.**

To keep a firearm safe and in good working condition, it must be kept clean and covered with a light film of good quality gun oil to prevent corrosion. The barrel bore should be cleaned and left free of debris. Follow these steps:

- Remove excessive firing residue from the bore and chamber using a properly fitted brass brush dipped in gun cleaning solvent. Finish the bore cleaning process by running a dry cotton cloth patch through the bore to remove remaining residue and solvent.
- Clean the exterior of the firearm using a non-abrasive cleaning cloth. Remove dust and residue from small crevices using a small plastic brush.
- After cleaning, rub the firearm with a lightly oiled cloth.

The barrel break-in period will take approximately 50 rounds. After shooting 50 rounds, we suggest cleaning the barrel with CLP and brushes or patches.

EXPLODED VIEW



PART LIST

1	EJECTOR	34	SEAR
2	EJECTOR SPRING	35	SEAR SPRING
3	EJECTOR PIN	36	SAFETY PIN
4	EXTRACTOR	37	TRIGGER / STRIKER BLOCK PIN
5	EXTRACTOR PIN	38	TRIGGER HOUSING
6	EXTRACTOR SPRING	39	OVER TRAVEL ADJUSTMENT SCREW
7	BOLT	40	SAFETY SPRING
8	BOLT HANDLE SCREW	41	SAFETY
9	BOLT HANDLE	42	STOCK
10	BOLT KNOB	43	TRIGGER GUARD
11	FIRING PIN SPRING	44	TRIGGER GUARD SCREW COMPRESSION LIMITER, REAR
12	FIRING PIN	45	TRIGGER GUARD SCREW, REAR
13	BOLT SHROUD	46	MAGAZINE LOCK SPRING
14	FIRING PIN SEAR PIN	47	MAGAZINE LOCK
15	FIRING PIN SEAR	48	MAGAZINE LOCK PIN
16	THREAD PROTECTOR	49	TRIGGER GUARD SCREW COMPRESSION LIMITER, FRONT
17	O'RING	50	TRIGGER GUARD SCREW, FRONT
18	BARREL	51	MAGAZINE
19	BARREL NUT		
20	RECOIL LUG		
21	RECEIVER		
22	BOLT RETAINER		
23	BOLT RETAINER SPRING		
24	BOLT RETAINER PIN		
25	TRIGGER HOUSING PIN		
26	STRIKER BLOCK STOP PIN		
27	STRIKER BLOCK		
28	PIN RETAINER		
29	TRIGGER SEAR SPRING		
30	TRIGGER		
31	TRIGGER SEAR		
32	BALL		
33	TRIGGER PULL ADJUSTMENT SCREW		

TAURUS SERVICE

Should your firearm require adjustment or repair, contact our Customer Care department at 800-327-3776.

Please follow these suggestions to expedite service in the United States to return any firearm to us for adjustment or repair.

1. Federal law permits you to return your firearm to the manufacturer for service via common carriers. However, state and local firearms laws vary greatly; you should consult your local prosecuting attorney regarding any restrictive laws in your jurisdiction regarding your shipment or receipt of firearms. With the above in mind, it is strongly recommended that any firearm sent to us for repair be sent through a federally licensed dealer.

2. All firearms must be shipped to us prepaid. WE WILL NOT ACCEPT COLLECT SHIPMENTS.

3. Warranty Service: If your product is covered under the Taurus® Limited Lifetime Warranty (<https://warranty.taurususa.com>) or was manufactured prior to January 1, 2017, you must contact Taurus to receive warranty service. You may contact Taurus by calling 800-327-3776, logging onto <https://taurususa.com>, or in writing: Taurus, Attn: Warranty Service, 100 Taurus Way, Bainbridge, GA 39817. Please include a description of the claimed issue, along with your name, address, telephone number, model and serial number of your firearm, proof of purchase, and date of purchase.

4. FIREARMS MUST BE SHIPPED UNLOADED. Double check the chamber of your firearm before shipping. If firearms are sent to Taurus in a loaded condition, we are required by law to notify the Federal authorities.

5. DO NOT include telescopic sights, custom grips, holsters, or other accessories with any firearm shipped to us.

PARTS

Firearms require periodic maintenance, inspection, adjustment and repair. If your rifle has a malfunction, be safe. Stop firing, “clear” and unload the rifle and take it to a qualified gunsmith. Before shooting it again, contact our Customer Care department if you have any questions.

If water, sand, or other foreign matter gets in your rifle, open the bolt, visually and physically verify that the rifle chamber is empty, and thoroughly clean it.

Failure to keep your firearm clean, lubricated and in proper working condition can be dangerous. Our Customer Care department maintains a full stock of replacement parts for current Taurus firearms. Even though most gunsmiths have the knowledge, training and ability to make the necessary repairs to your firearm, the skill and workmanship of any particular gunsmith is totally beyond our control. Should your firearm require service, return it to our Customer Care department.

Remember, unauthorized adjustments or parts replacement can void your warranty. If you choose to have someone else do the required work, the purchaser and/or installer of parts must accept full responsibility for the correct adjustment and function of the firearm.



TAURUS® LIMITED LIFETIME WARRANTY

Taurus hereby provides the following **LIMITED LIFETIME WARRANTY** to the original purchaser of the enclosed Taurus® firearm subject to the terms and conditions set forth below. **THIS IS THE ONLY WARRANTY EXTENDED BY TAURUS COVERING THIS FIREARM.**

What does the warranty cover and what is its duration?

Taurus warrants to the original purchaser that the enclosed firearm was made free of defects in material, function, and workmanship. Taurus promises to remedy any defect in material, function or workmanship for the entire time that the original purchaser owns the firearm. This warranty covers the firearm's finish, grips, magazines, sights or accessories for the first year. Any claims of defect related to lasers must be directed to the manufacturer of the laser. This warranty terminates automatically upon the transfer of this firearm to any individual or entity other than the original purchaser.

Disclaimer and Limitation of Remedy.

ANY IMPLIED WARRANTIES OF MERCHANTABILITY IMPARTED BY STATE LAW WILL BE LIMITED TO ONE (1) YEAR.

Some States do not allow limitations on how long an implied warranty lasts, so the above-limitation may not apply to you.

ANY AND ALL INCIDENTAL AND CONSEQUENTIAL DAMAGES ARE EXPRESSLY DISCLAIMED UNDER ALL CIRCUMSTANCES.

Some States do not allow the exclusion or limitation of incidental or consequential damages, so the above limitation or exclusion may not apply to you. This **LIMITED LIFETIME WARRANTY** gives you specific legal rights, and you may also have other rights which vary from State to State.

Taurus will not be responsible for:

1. Defects or malfunctions resulting from careless handling, unauthorized adjustments or modifications.
2. Use of defective or improper ammunition, reloaded ammunition, corrosion, neglect, abuse, ordinary wear and tear or unreasonable use.
3. Criminal misuse, negligence or use under the influence of drugs or alcohol.

How do you obtain warranty service?

The warranty becomes effective only if activated by the original purchaser within thirty (30) days of the purchase date by registering online at: <https://warranty.taurususa.com> or by calling Taurus at 800-327-3776.

You must contact Taurus to receive warranty service. You may contact Taurus by calling 800-327-3776, logging onto <https://taurususa.com>, or in writing: Taurus, Attn: Warranty Service, 100 Taurus Way, Bainbridge, GA 39817. Please include a description of the claimed issue, along with your name, address, telephone number, model and serial number of your firearm, proof of purchase, and date of purchase.

IMPORTANT DO NOT DISCARD

**KEEP THIS MANUAL WITH THE FIREARM
UPON CHANGE OF OWNERSHIP.**

TAURUS ARMAS, S.A.

Av. São Borja, 2181 – Prédio A
São Leopoldo/Fazenda São Borja
Rio Grande do Sul
93.035-411
Brasil

TAURUS INTERNATIONAL MANUFACTURING, INC.

100 Taurus Way
Bainbridge, GA 39817
Telephone: 1-800-327-3776



TAURUSUSA.COM

TAURUS.COM.BR